

Role of bronchoalveolar lavage (BAL) in the diagnostic work-up of patients with interstitial lung disease (ild)





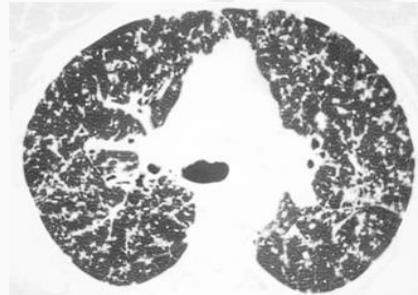
Sarcoidosis

Diagnostic value of BAL in ild

Radiographic features: female 45 yrs



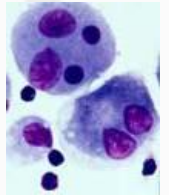
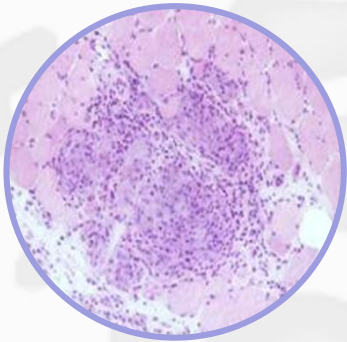
Chest
radiograph



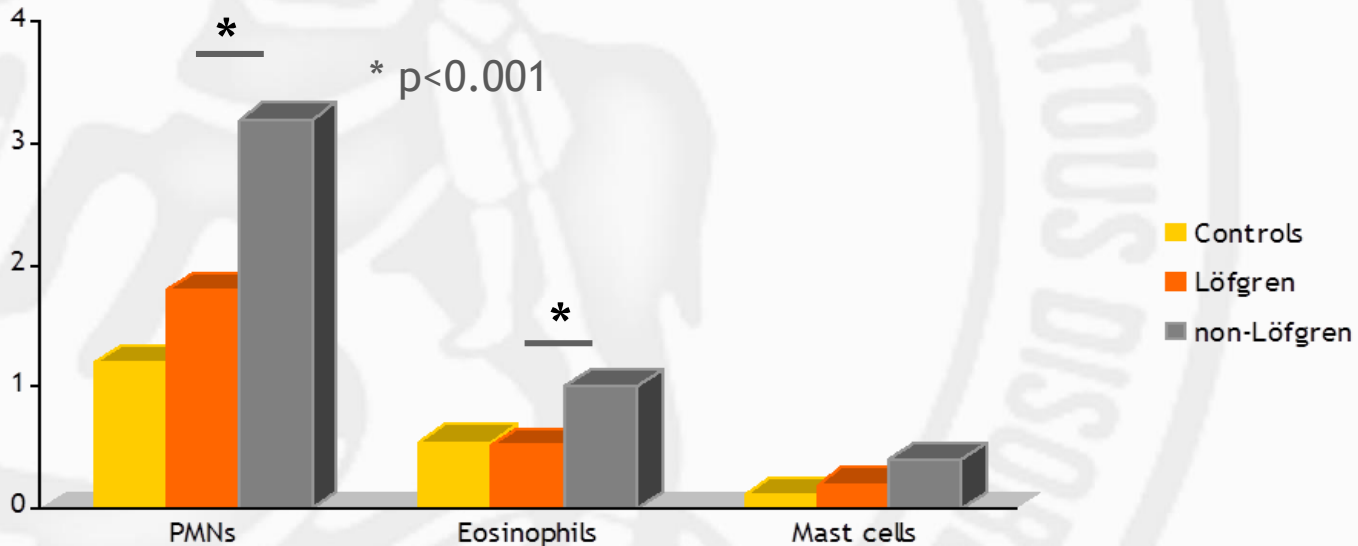
High resolution CT scan

BALF features in sarcoidosis

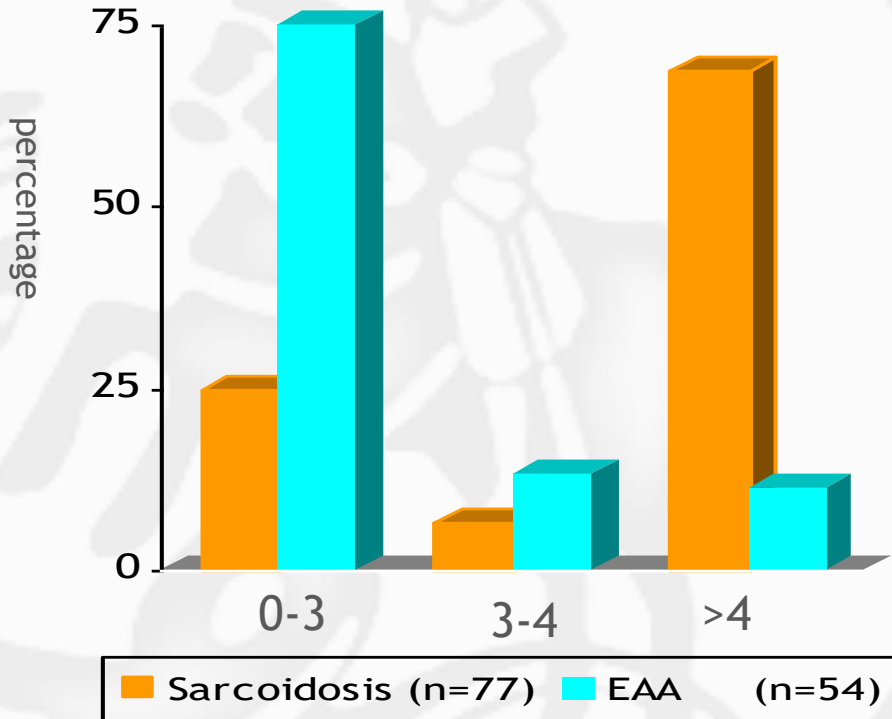
- lymphocytosis
- CD4/CD8 ratio: \uparrow / = / \downarrow
- multinucleated macrophages
- iron staining negative
- neutrophils \uparrow \Rightarrow prognosis \downarrow



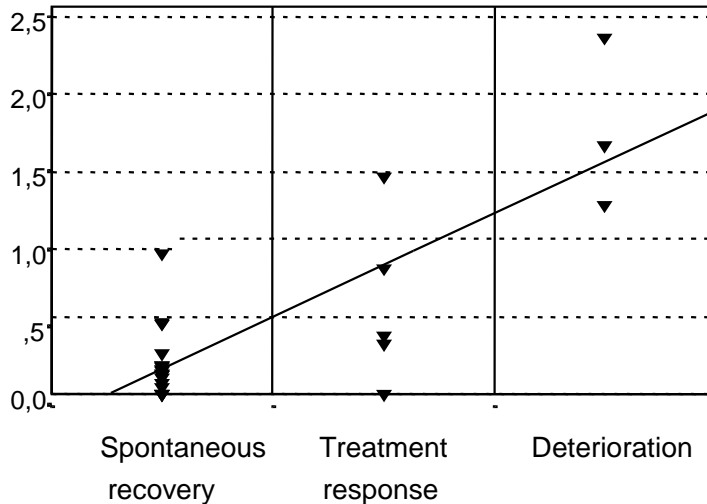
Differential cell count in BALF: percentage of total cell count



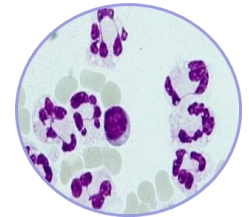
Distribution CD4/CD8 ratio in BALF of sarcoidosis and Extrinsic Allergic Alveolitis (EAA) patients



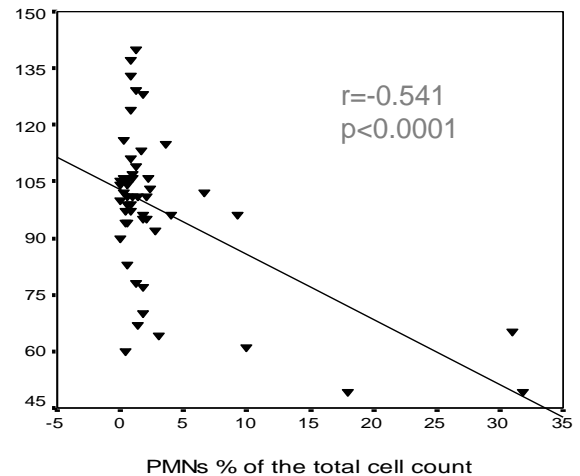
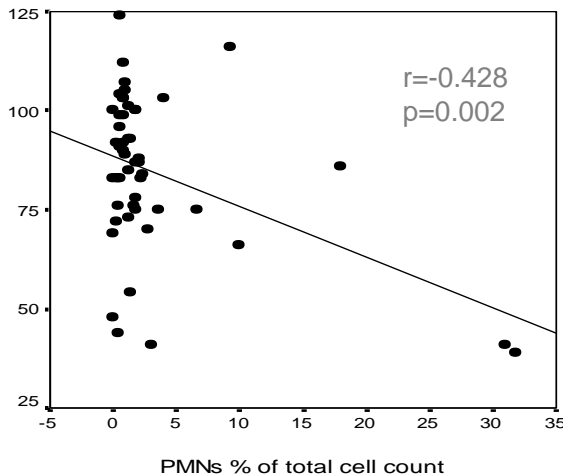
Relation BAL fluid PMNs x10⁴/ml with progression in sarcoidosis



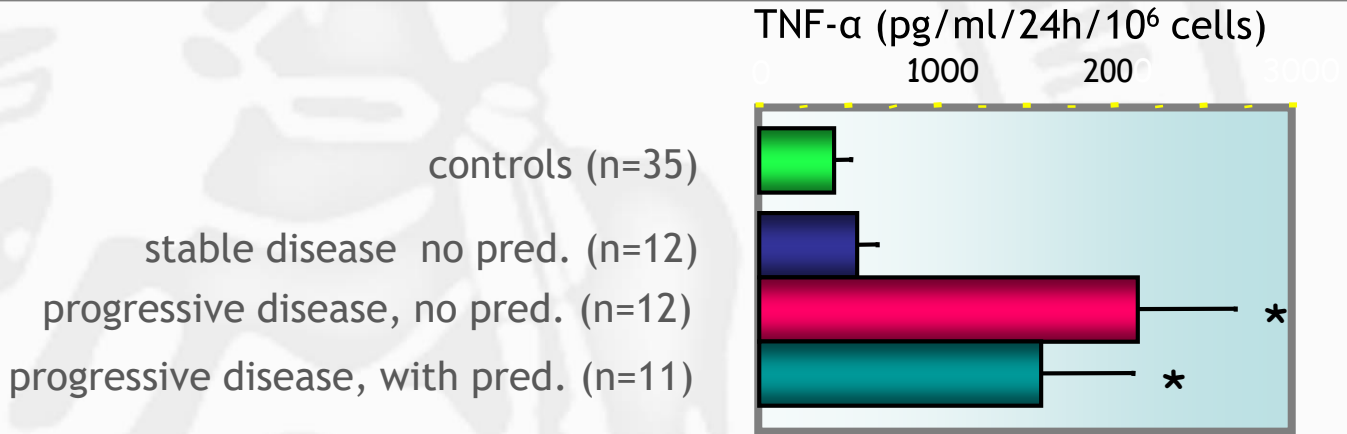
$r=0.58$
 $p<0.005$



Relationship BALF PMNs with DLCO and FVC, % predicted in sarcoidosis

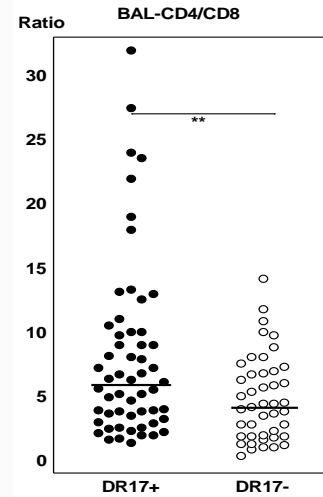
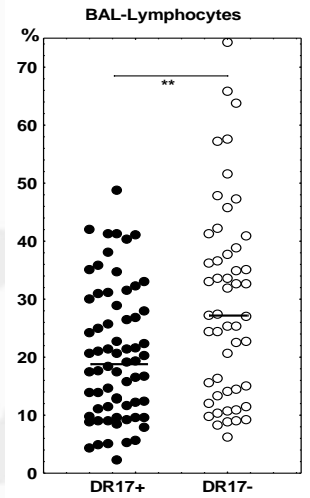


TNF- α release BALF cells obtained from patients with chronic sarcoidosis (10.4 \pm 1.3 yrs)

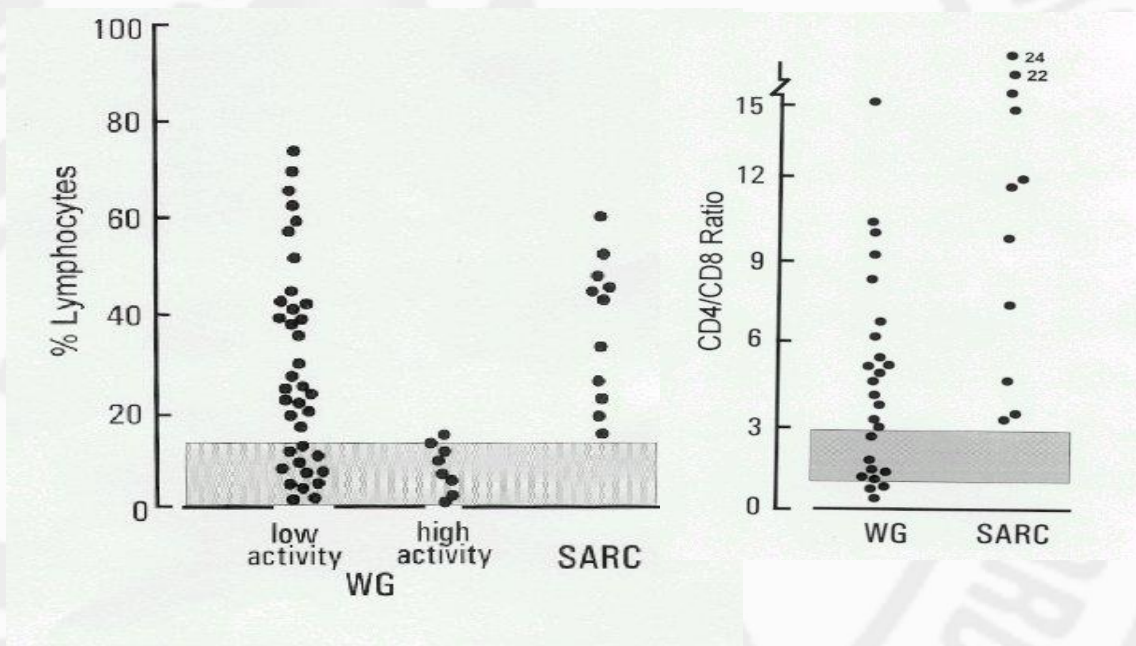


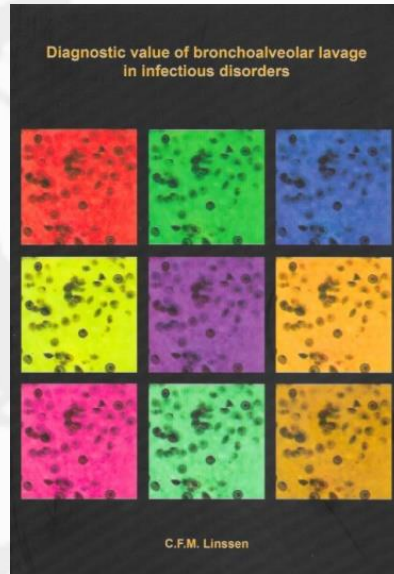
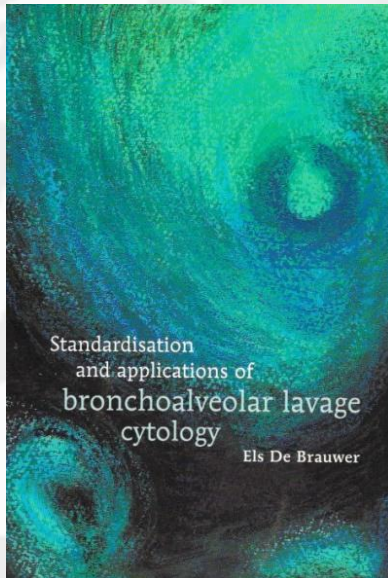
* p < 0.05 vs. controls

BALF parameters in HLA DR17⁺ vs DR17⁻ sarcoidosis patients



BALF cell profiles in sarcoidosis vs Wegener's granulomatosis





WASOG

Join us: become a member!

World
Association for
Sarcoidosis and
Other
Granulomatous Disorders



www.wasog.org